



MONTHLY MEMBERSHIP PROGRESS REPORT

District 322C3

Results as of: 6/30/2015

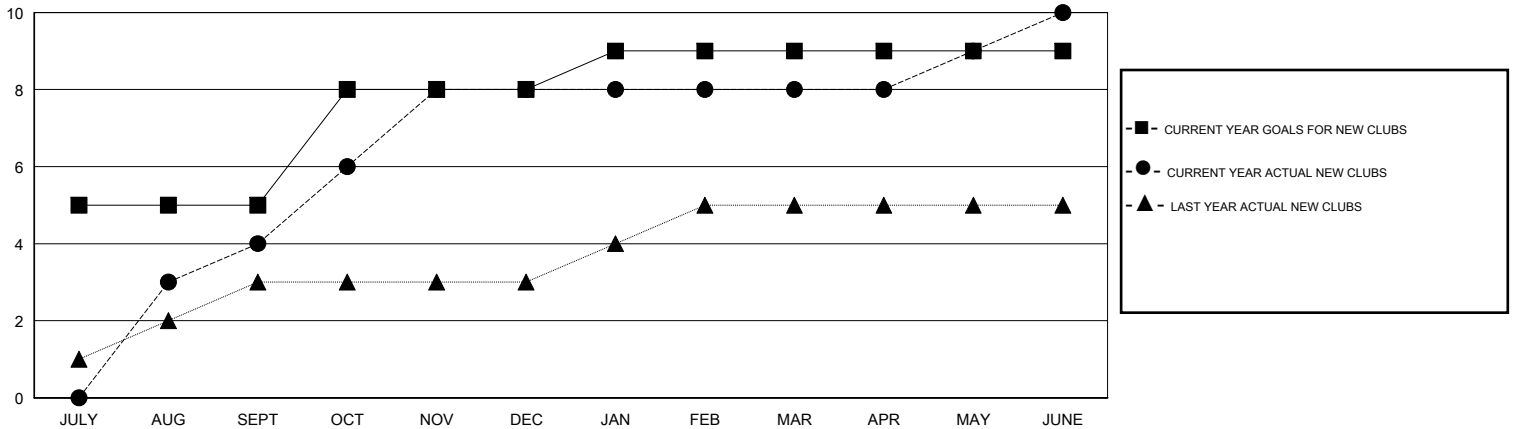
GMT: NAZMUL HAQUE

LOCATION INDIA

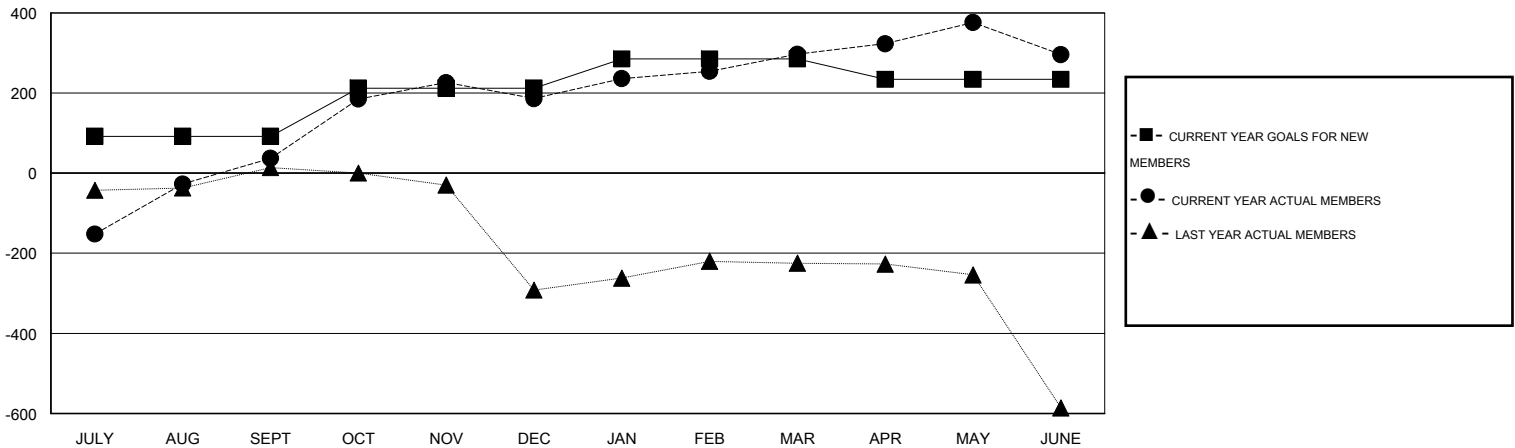
GMT CA 6

| Clubs | | | | | Members | | | | |
|-----------------------|---------------|-----------|---------------|---------------|-----------------------|-----------------|-------------------------------|-----------------|---------------|
| RESULTS FOR 2014-2015 | | | | | RESULTS FOR 2014-2015 | | | | |
| QUARTER | NEW CLUB GOAL | NEW CLUBS | DROPPED CLUBS | NET GAIN/LOSS | QUARTER | NEW MEMBER GOAL | CHARTER AND NEW MEMBERS ADDED | DROPPED MEMBERS | NET GAIN/LOSS |
| JULY/AUG/SEPT | 5 | 4 | 3 | 1 | JULY/AUG/SEPT | 92 | 307 | 270 | 37 |
| OCT/NOV/DEC | 3 | 4 | 1 | 3 | OCT/NOV/DEC | 120 | 233 | 84 | 149 |
| JAN/FEB/MAR | 1 | 0 | 2 | -2 | JAN/FEB/MAR | 73 | 177 | 66 | 111 |
| APR/MAY/JUNE | 0 | 2 | 0 | 2 | APR/MAY/JUNE | -51 | 210 | 211 | -1 |

GOALS AND ACTUAL NEW CLUBS CUMULATIVE



GOALS AND ACTUAL MEMBERS CUMULATIVE



| | | |
|------------------------|---|----------------------------------|
| DROPPED CLUBS: 6 | 92 CLUBS OF 107 ADDED 1 OR MORE NEW MEMBERS | GENDER DISTRIBUTION |
| | | MALE 2,841 (78.87%) |
| | | FEMALE 761 (21.13%) |
| DROPPED MEMBERS | CLICK HERE FOR HEALTH ASSESSMENT DATA | FAMILY UNIT MEMBERS 1,907 |
| DECEASED 12 | | HEAD OF HOUSEHOLD 755 |
| CLUB CANCELLED 102 | | NON-HEAD OF HOUSEHOLD 1,152 |
| OTHER 517 | | |
| TOTAL 631 | | |